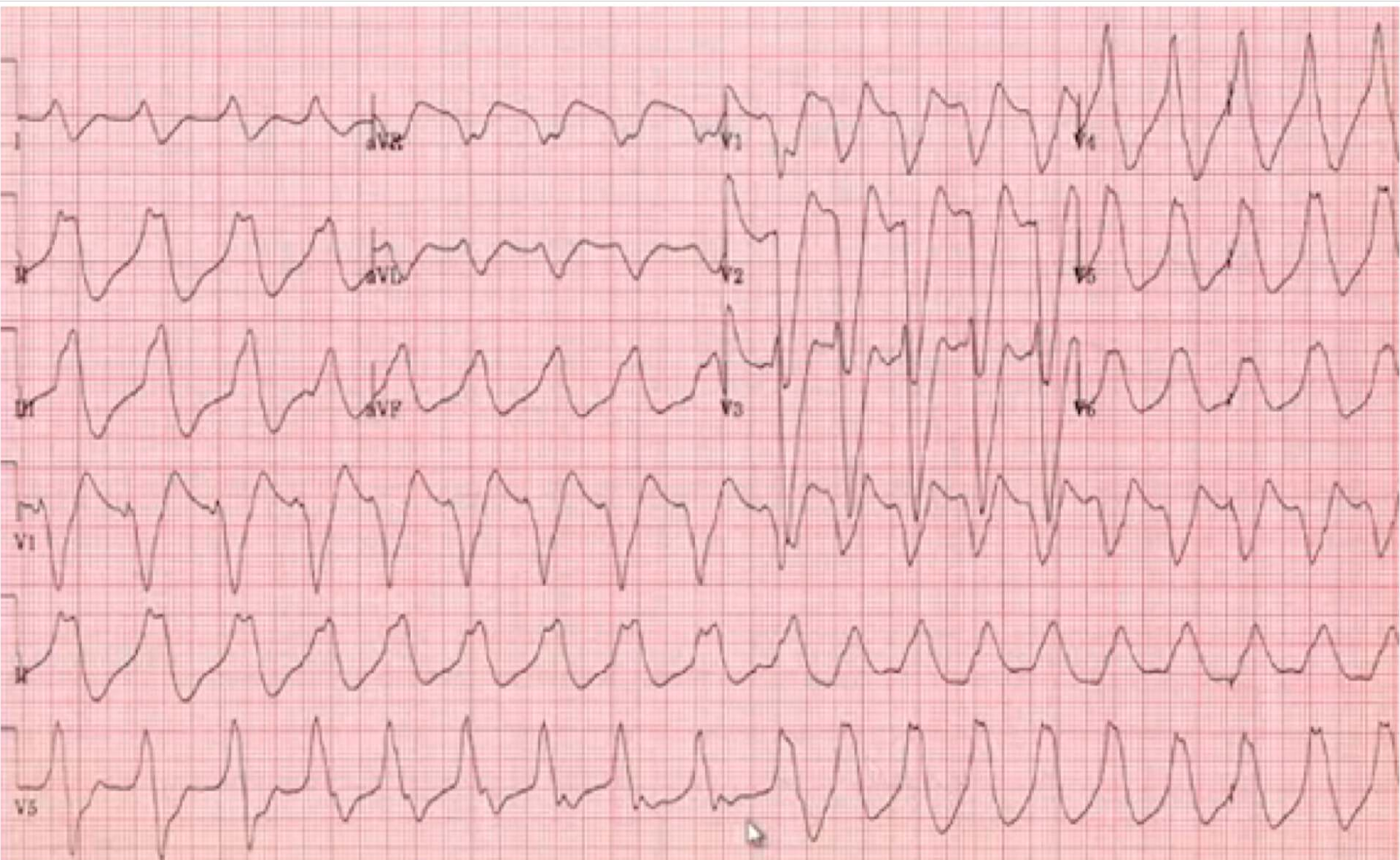


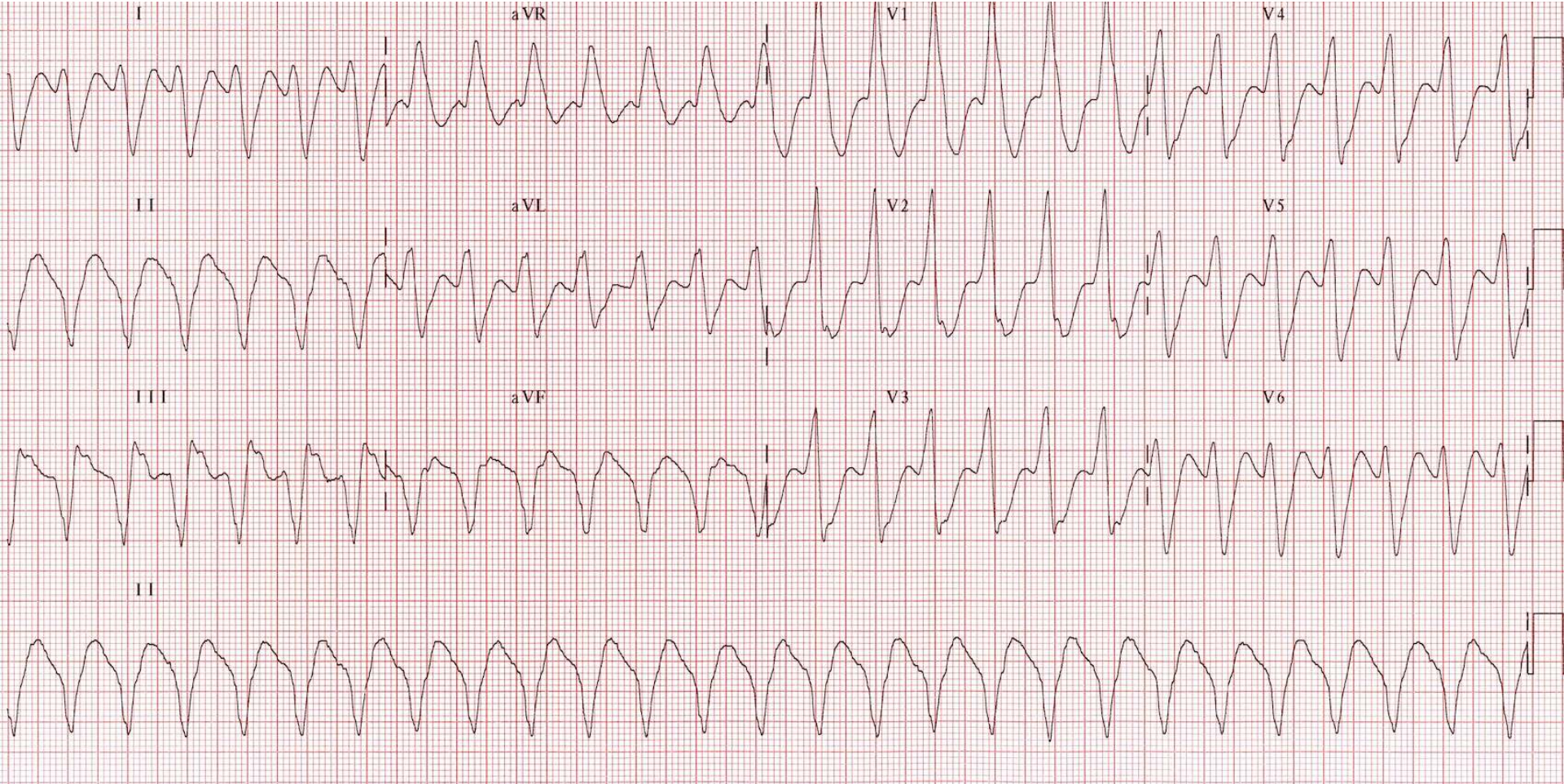
# ECG TEST

1 A 68 yo male with Hx of AMI presents with lethargy and palpitations





2. A 68 yo male with PMHx of an AMI presents with SOB and palpitations



3. You are given this ECG tracing of a 48 year old male with high fevers and a right basal pneumonia



# 4 A 58 yo male presents with dizziness

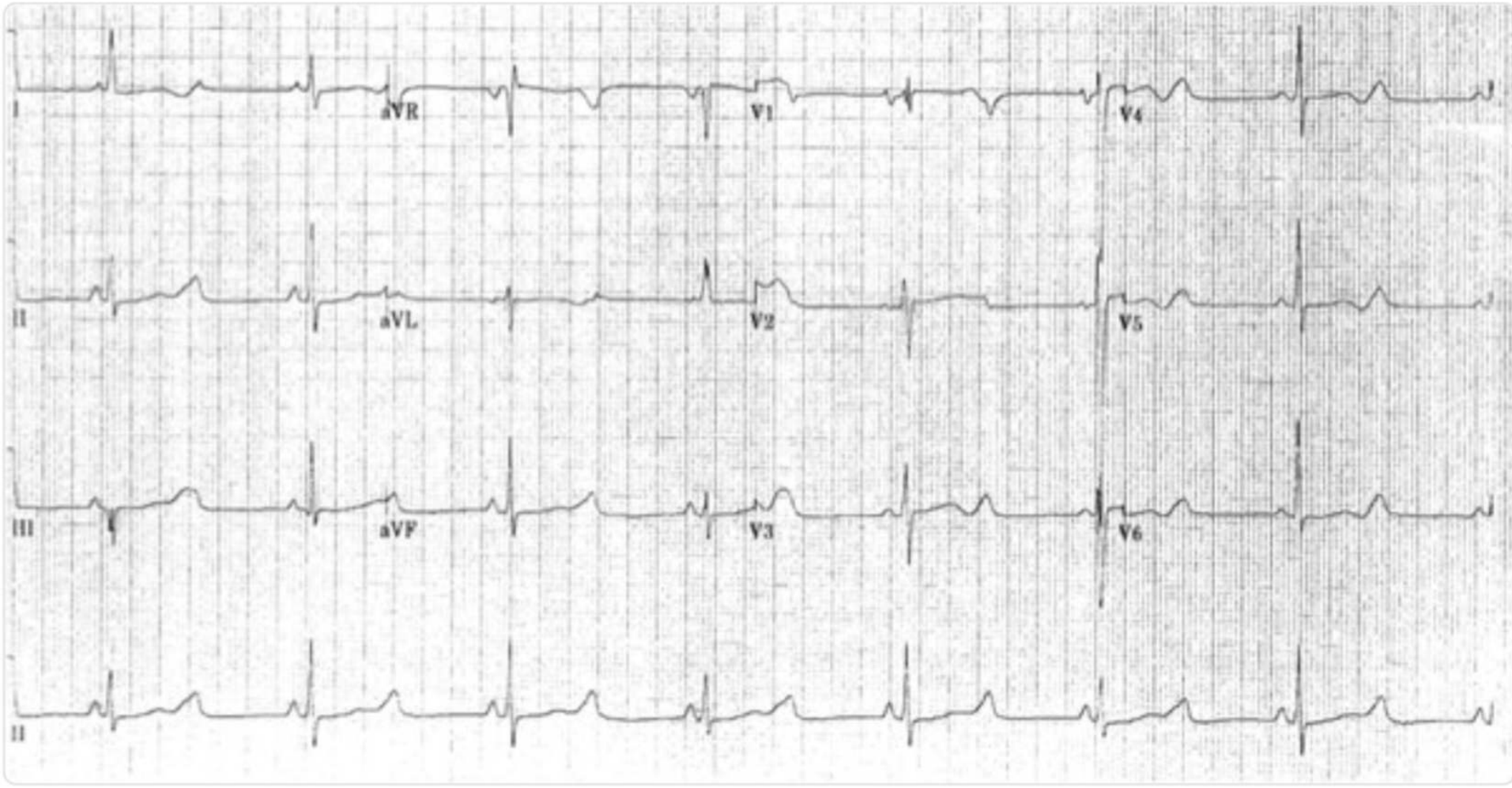




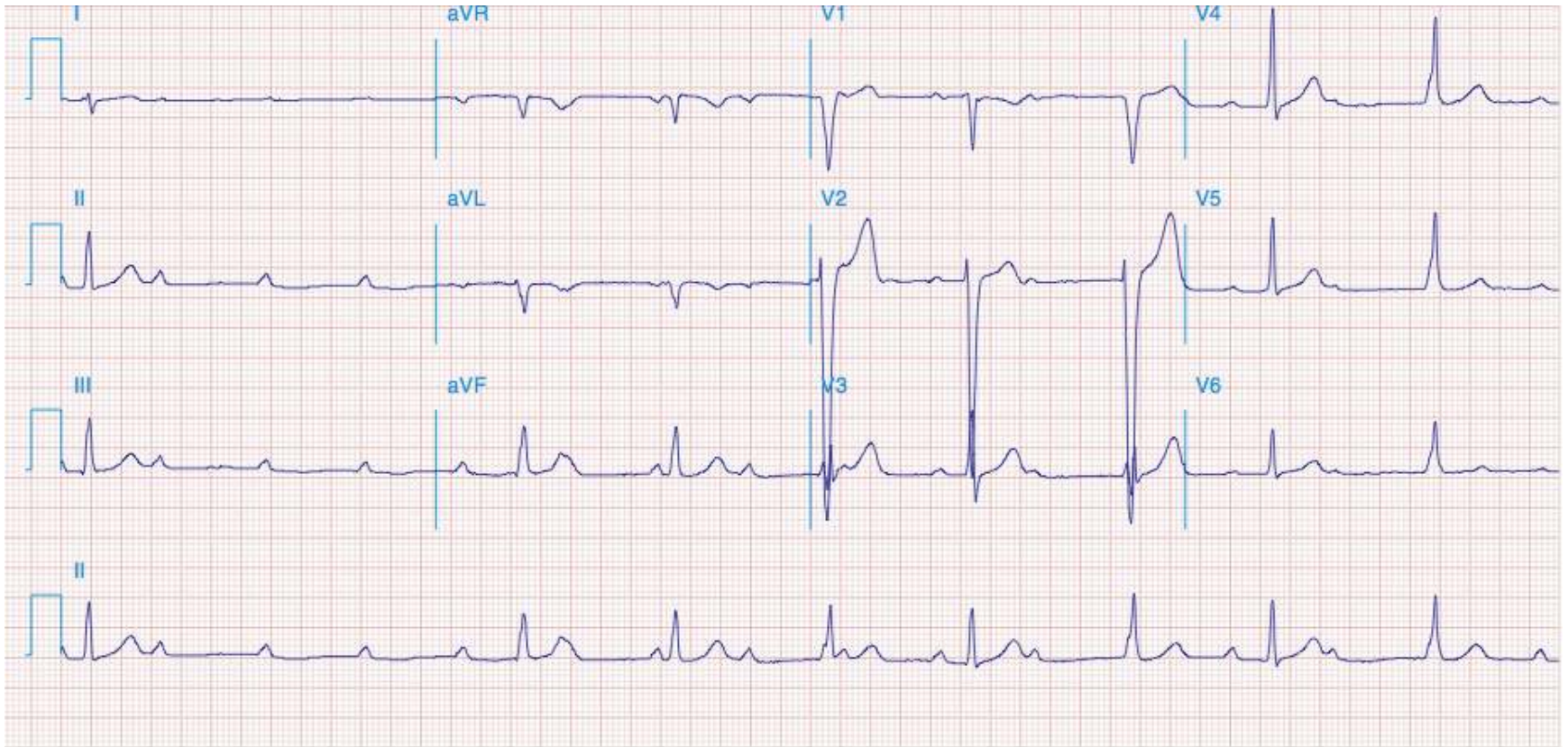
# 5. 60 year old male with occasional dizziness. His K is 8.5



# 6 Elderly patient with syncope

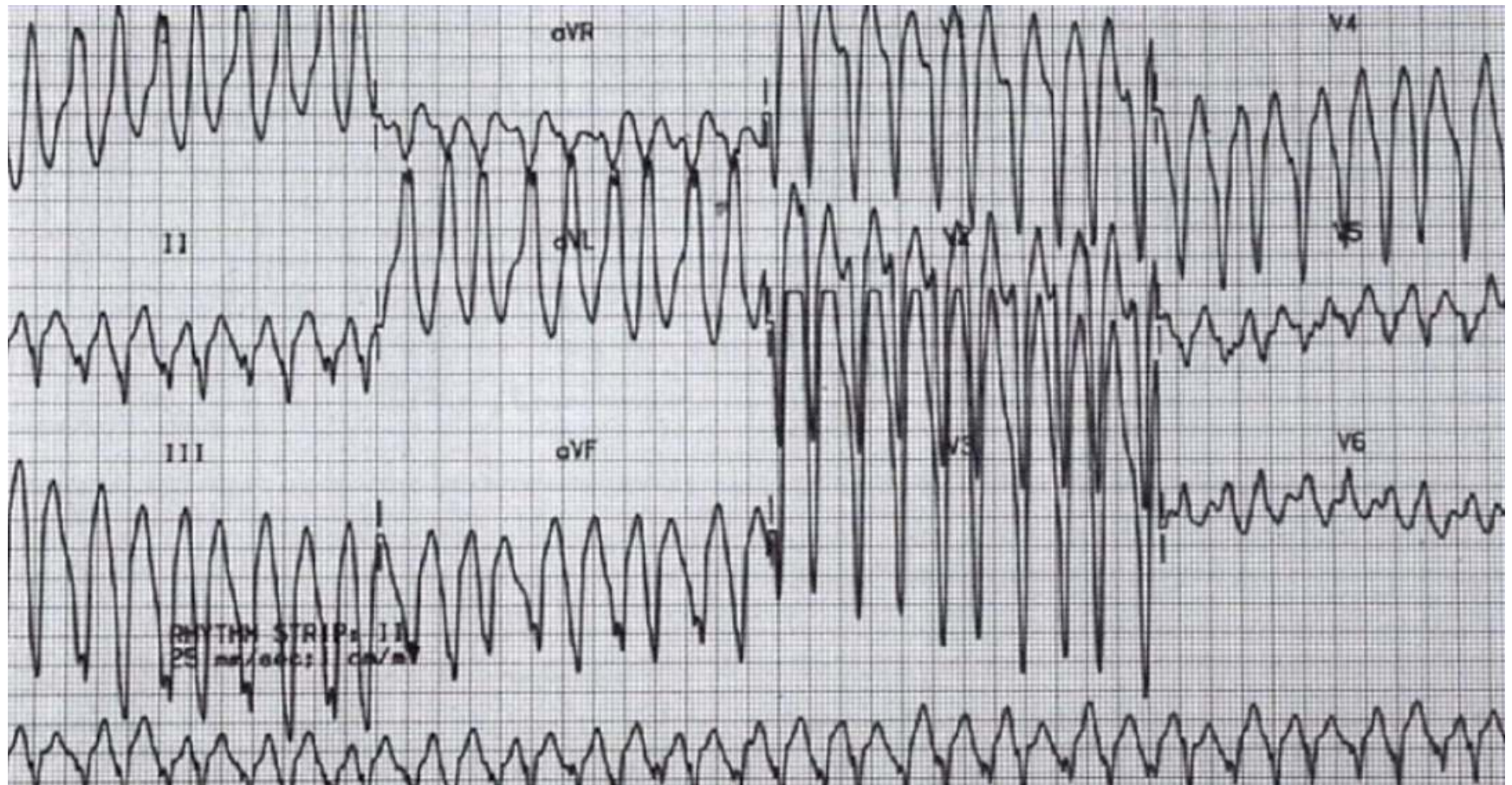


# 7 A 68 yo male presents with an episode of syncope

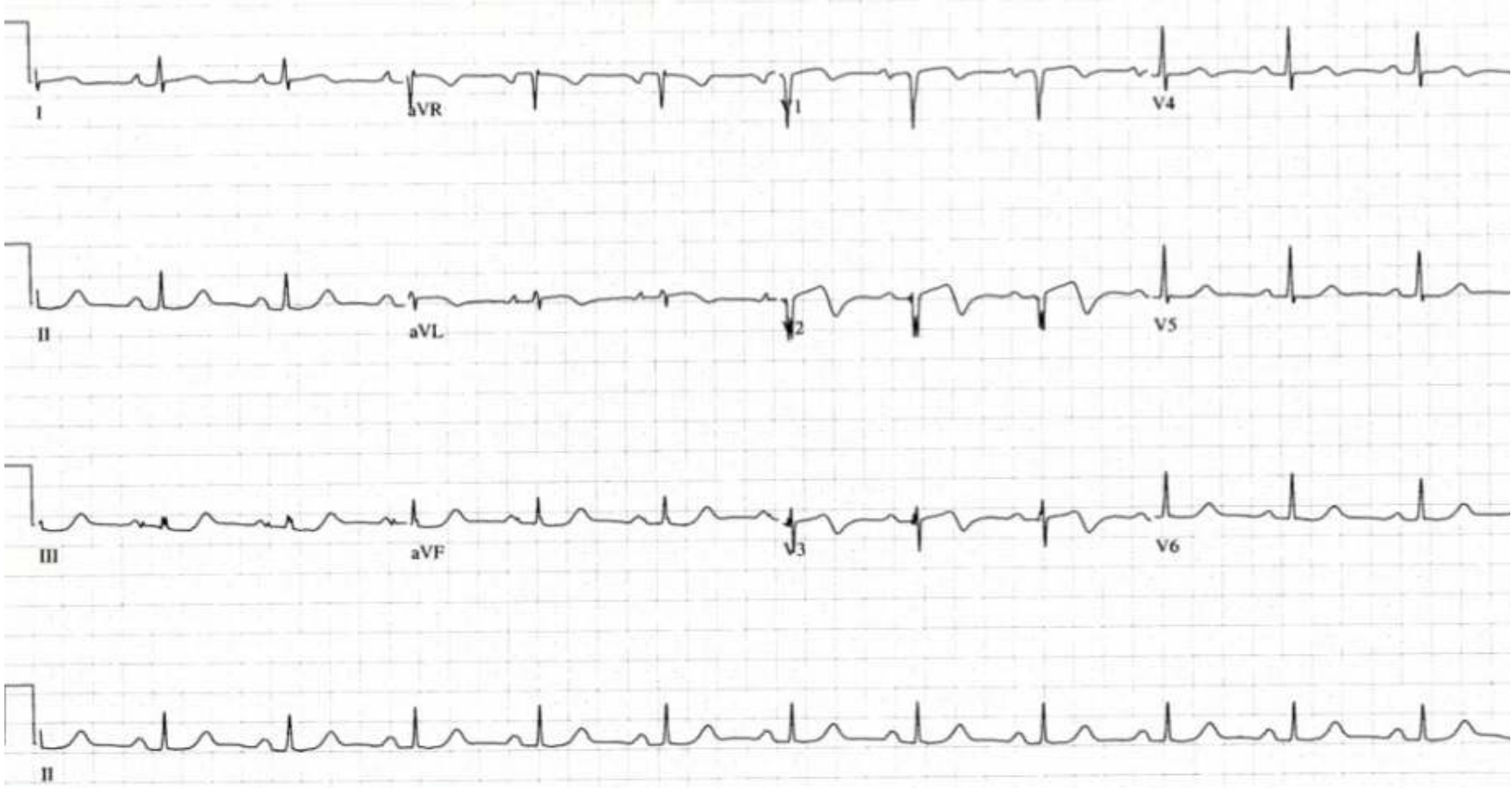




**8 A 32 year old woman presents with palpitations and an episode of syncope.**

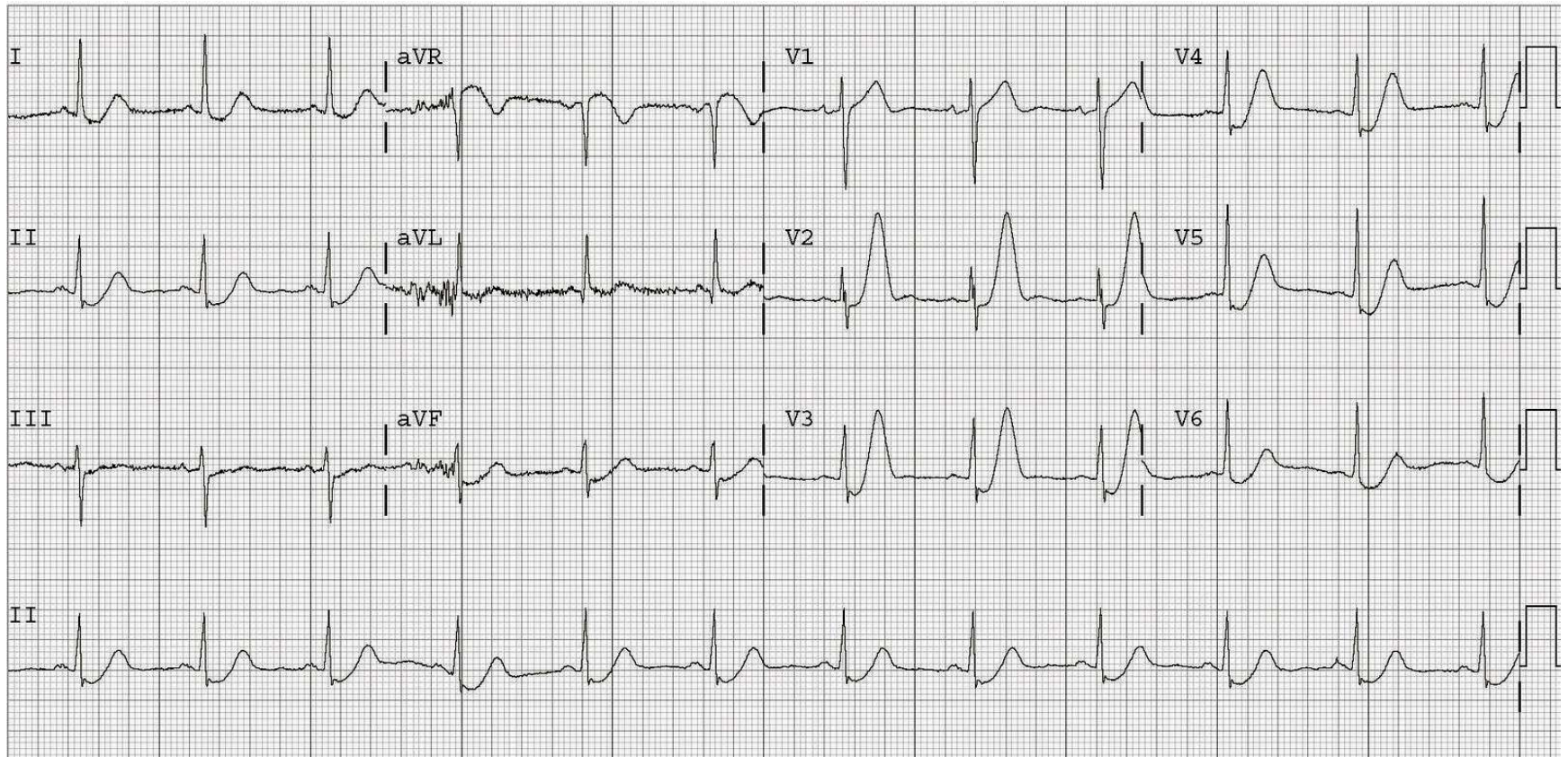


# 9 A 52 year old man with chest pain



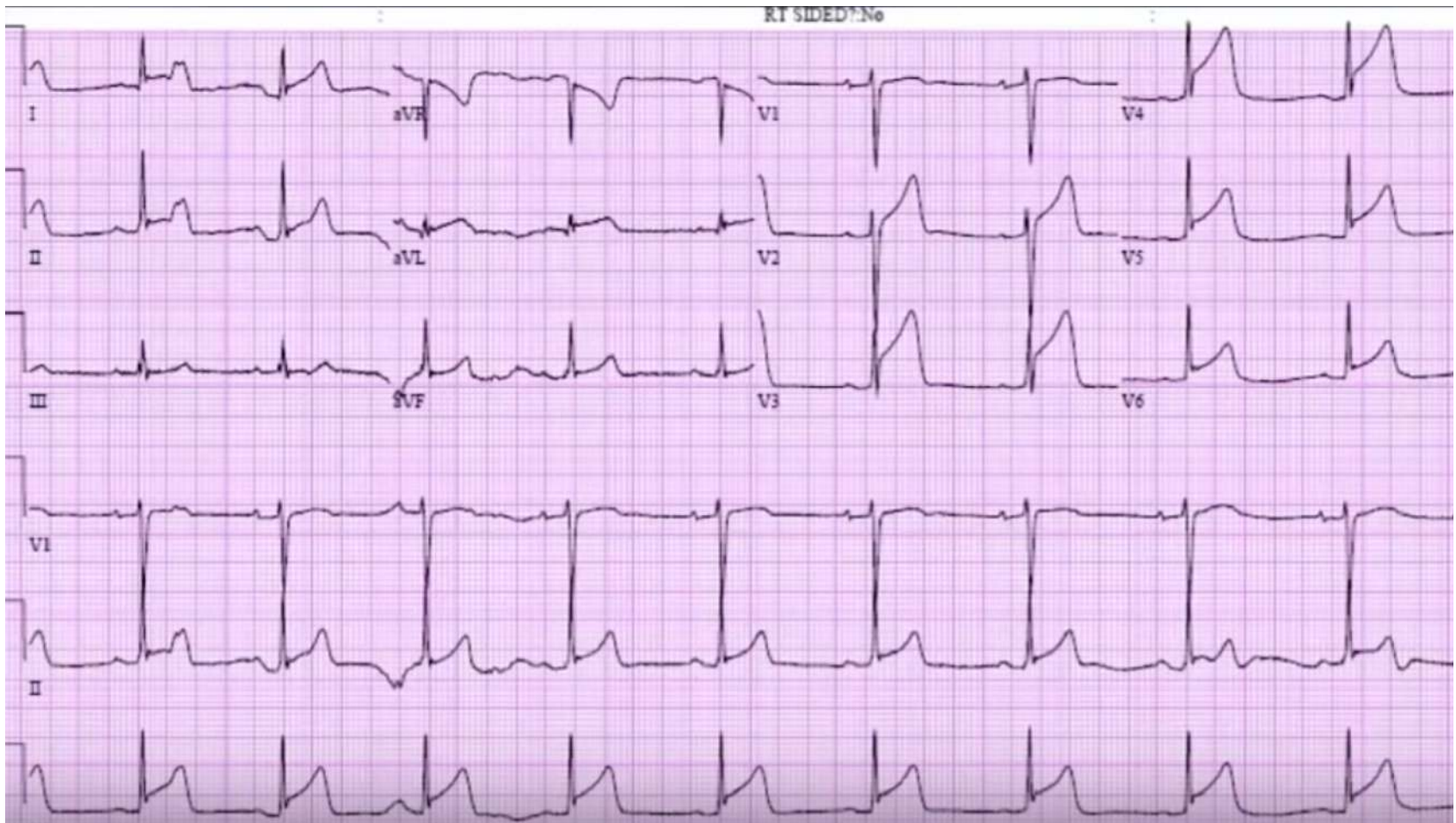


# 9 43 year old male with chest pain

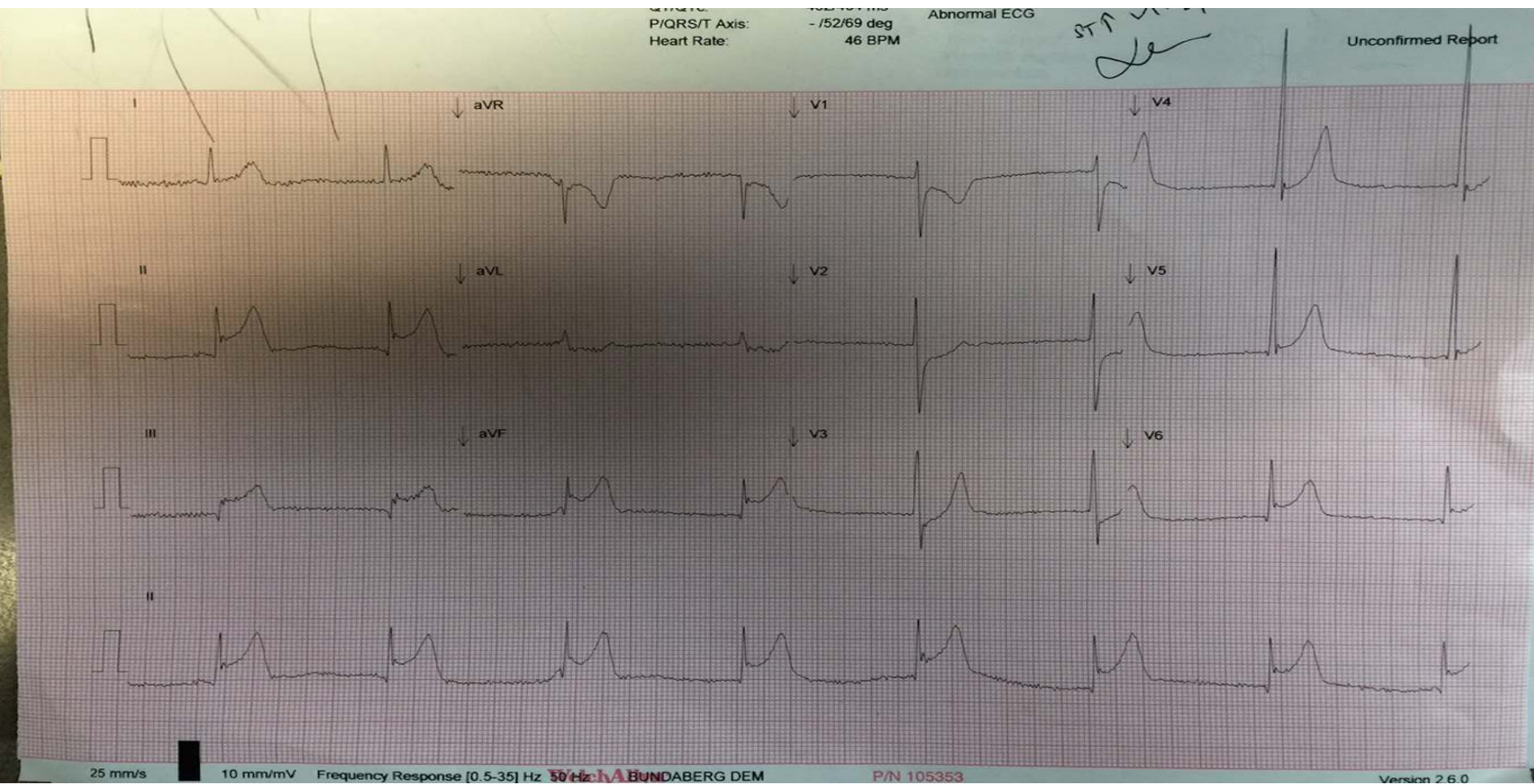




# 10. 23 yo male: 6 hours central sharp chest pain, left arm heaviness and diaphoresis.

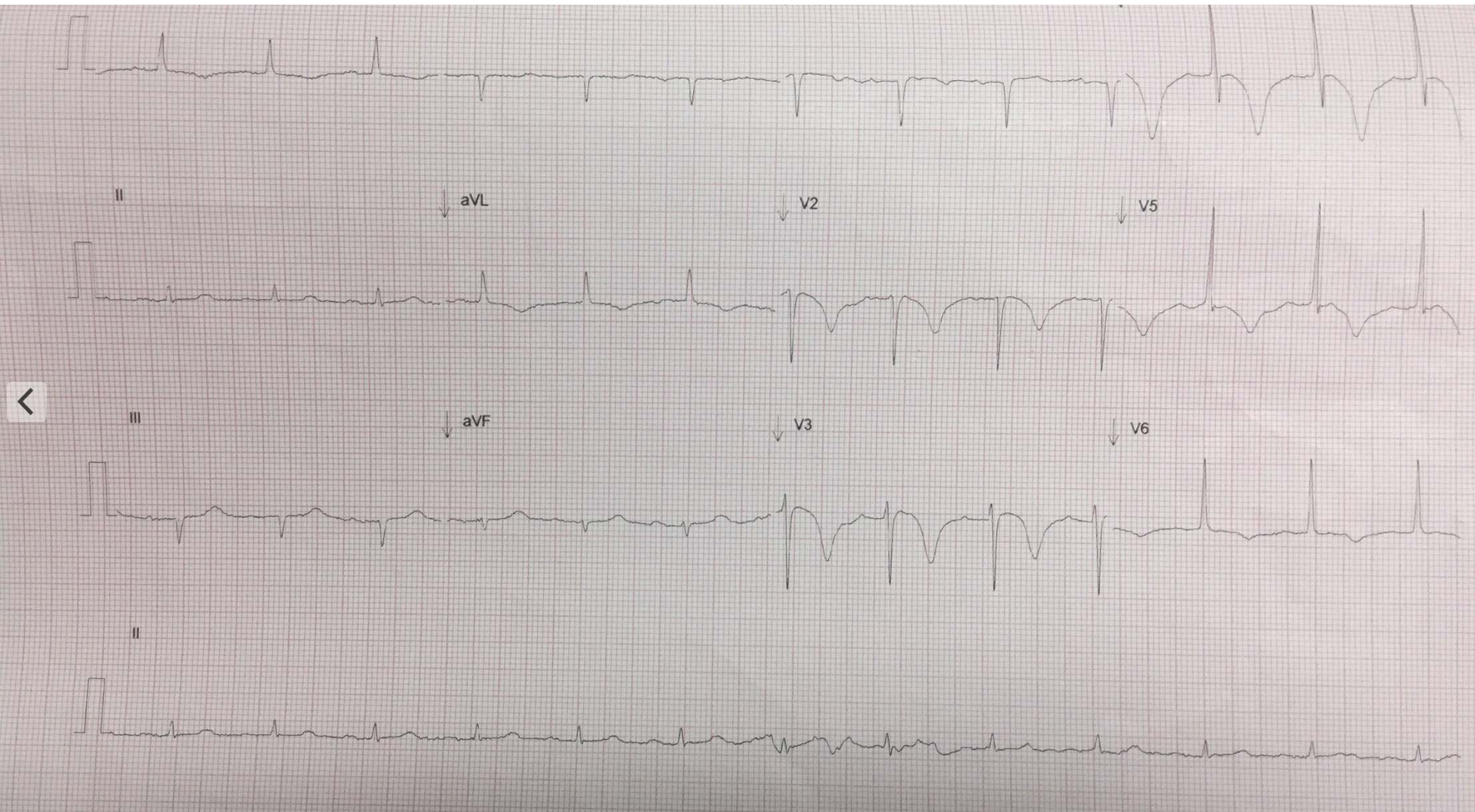


# 11 19 yo male with stabbing central chest pain, down arm and pleuritic



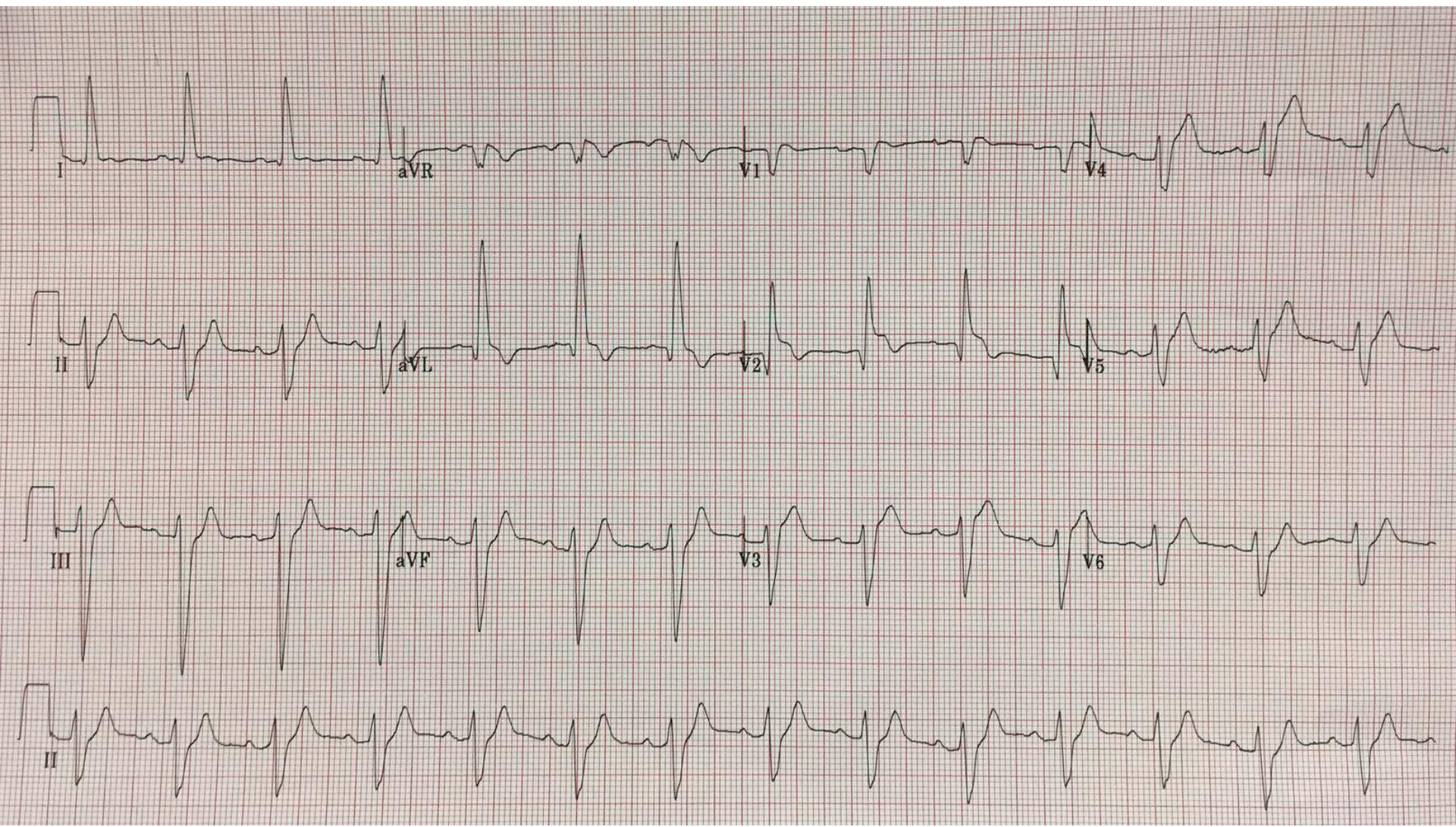


# 12. 70 yo woman with chest pain- now pain-free





# 13. A 63 yo woman with chest pain

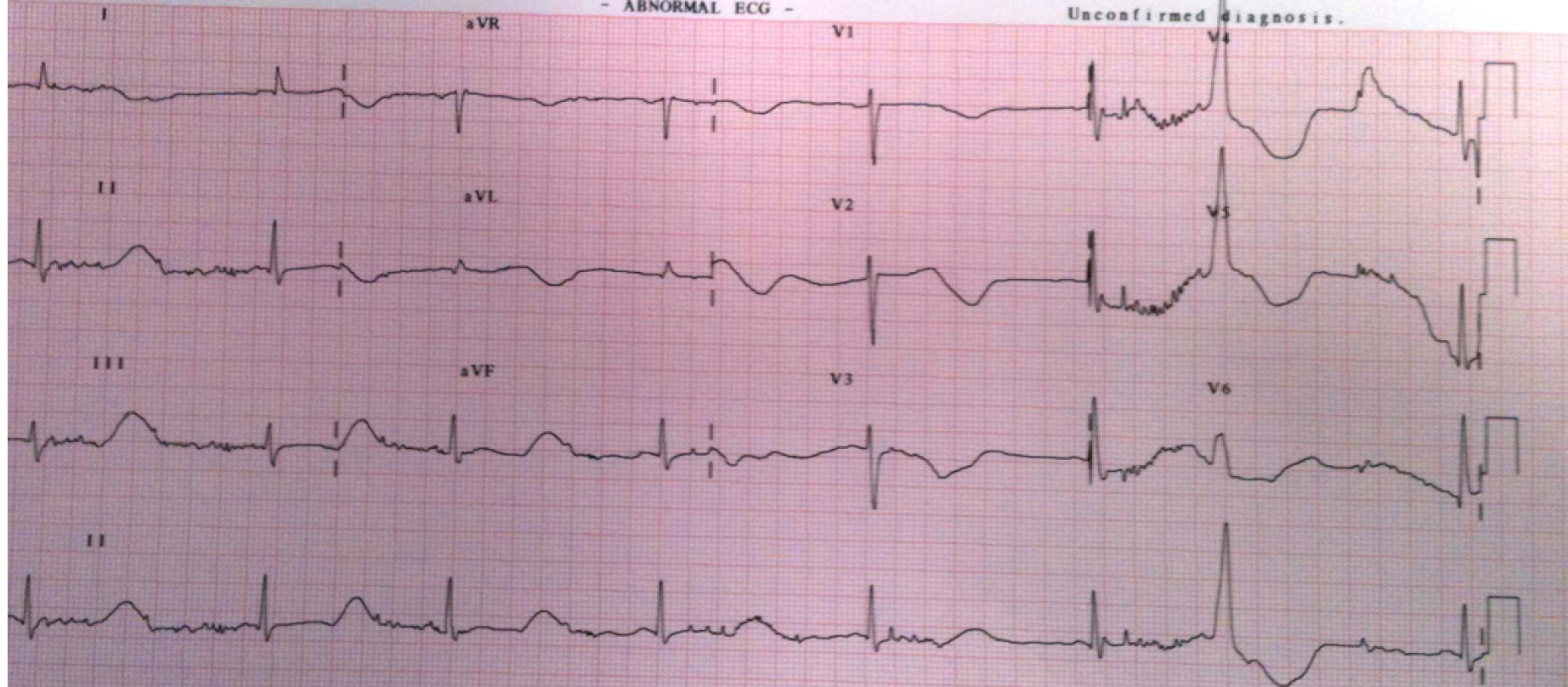




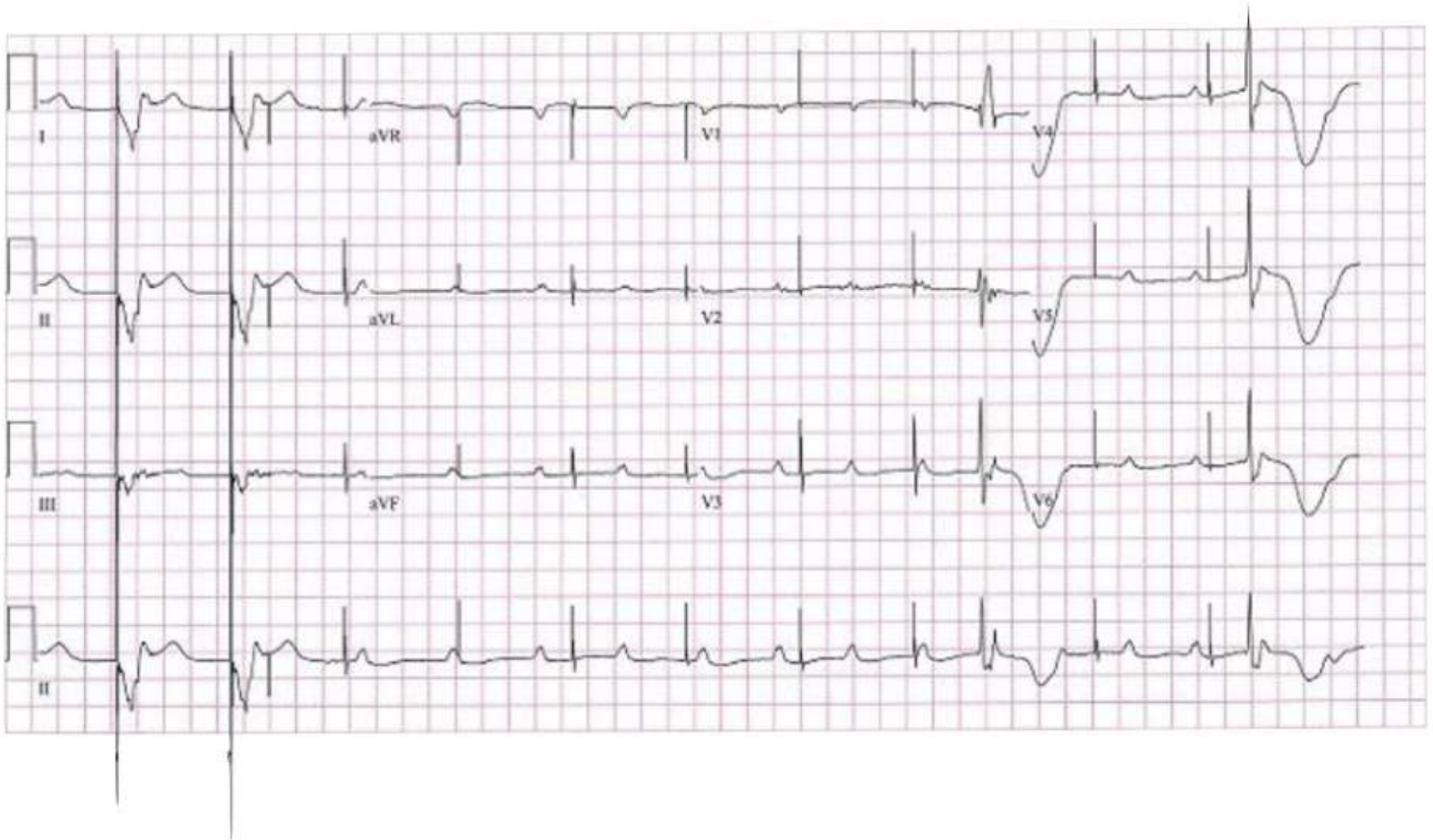
# 14 A 43 year old ex drug user presents with episodes of seizures.

Rate 42 . AGE NOT ENTERED, ASSUMED TO BE 50 YEARS FOR PURPOSE OF ECG INTERPRETATION  
PR 146 . SINUS BRADYCARDIA, RATE 42.....normal P axis, rate < 50  
QRS 108 . VENTRICULAR PREMATURE COMPLEX.....short R-R, wide QRS  
QT 627 . RSR' IN V1 OR V2.....small R' only  
QTc 524 . ABNORMAL T, PROBABLE ISCHEMIA, INFERIOR LEADS.....Tc -.40mV II III aVF

-Axis--  
QRS 59  
QT 32  
QTc -66



# 15 A 62 year old male with dizziness





# 16 A 77 yo gentleman presented with episodes of syncope.

